

Research PROPOSAL

গুপি-বাঘা ড্রিলজি ও সত্যজিতের স্বতন্ত্রতাঃ
একটি বিশ্লেষণ

Zubayer Ibn Kamal
Journalism and Media Communication



Overview

01

Introduction

02

Question

03

Methodology

04

Theory

05

Data Analysis

06

Sampling & others

Introduction

Goopy-Bagha Trilogy

(1968-1980-1992)

Film by

Satyajit Ray



Research Question

1. What symbols have been used in the movies to show the social crisis?
2. How are the films affecting the people in society?
3. Why policymakers are no longer interested in making such films?



Research METHOD

- Interview Method
(In-depth interview)
- Content Analysis
- Descriptive Method



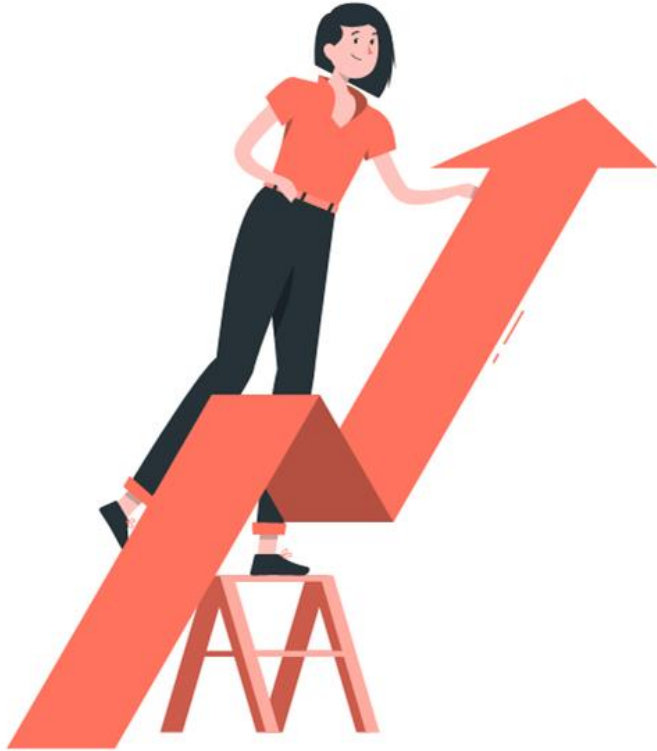
Theoretical Framework



Humorous
Communication
Theory



Representative
Theory



Data Analysis

Semiotic analysis is the study of signs and their meaning relating to the social world and social processes.



Icon



Index



Symbol

Sample



1968



1980



1992



\$180

This is the total budget



Reference

1. Khan, Z, (2018, May 25), Maharaja Selam, *Daily Star*, p, 6
2. Ray, S, (2006, Jane 20), Ami R Feluda, *Anandabazar Patrika*, p, 10

**Any
Question**



**THANK
YOU!!!!!!**

